



Festive Coffee Cup Sleeves

BY HANNAH CROSS

Add a little holiday magic to every sip with these quick and joyful Festive Coffee Cup Sleeves! Packed with playful mosaic patterns and charming details, they're the perfect fast make for gifting, selling, or simply treating yourself.



YARN



Yarn A: Mellowspun DK

100% Acrylic,
260m/284yds/100g

Yarn B: Prism DK

100% Acrylic,
265m/290yds/100g

HOOK



A 4.5mm(G+) and 4mm(G) crochet hook or hook needed to meet gauge

MATERIALS



Scissors
Tapestry needle
Stitch markers

GAUGE



20 sts and 18 rounds of overlay mosaic = 4" x 4"
(10cm x 10cm)

SIZING



8" circumference x 4" high
(adaptable to other sizes)

DIFFICULTY



Intermediate



This pattern contains affiliate links. You can find my [privacy and disclosure policy here](#).

Contents



Styling Gallery

Page 3



Yarn and Quantities

Page 4



Pattern Notes and Video

Page 5



Gauge and Stitches

Page 6



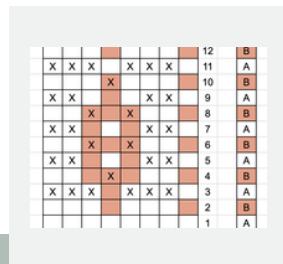
Written Pattern

Page 7



Stitch Tutorial

Page 11



Mosaic Charts

Page 12



Printable Template

Page 13



More from HanJan

Page 15

The pattern is in standard US terminology - see page 5 for a US to UK stitch conversion.

You are very welcome to sell any products that you make using my pattern on a small scale. If you could credit HanJan Crochet as the designer I would really appreciate it and if you tag me on social media I'd love to share it for you! You may not duplicate or share these patterns in any way. Thank you.

This ebook contains affiliate links. You can find my [privacy and disclosure policy here](#). Thank you for supporting HanJan Crochet.

Festive Coffee Cup Sleeves

GALLERY



COPYRIGHT NOTICE

The Festive Coffee Cup Sleeves Crochet Pattern and its contents are fully owned and copyrighted by HanJan Crochet Ltd., and all rights are reserved.

This pattern is protected by copyright and other intellectual property laws and may not be reproduced, distributed, or transmitted in any form or by any means without the prior written consent of the author (Hannah Cross of HanJan Crochet Ltd.).

Unauthorised distribution or reproduction of this pattern or elements of the instructions is strictly prohibited. By accessing this pattern, you acknowledge and agree to comply with these copyright terms and conditions.



Yarn Quantities and Details

RECOMMENDED YARN

Solid Colour Yarn A:

Mellowspun DK

100% Acrylic, 260m/284yds/100g

Multi Colour Yarn B:

Prism DK

100% Acrylic, 265m/290yds/100g

YARN ALTERNATIVES

Solid Colour Yarn A:

Premier Everyday Anti Piling DK

100% Acrylic, 250m/273yds/100g

Multi Colour Yarn B:

Premier Colorfusion DK

100% Acrylic, 298m/325yds/100g

HOOK

4.5mm(G+) **crochet hook** or hook needed to meet gauge for the overlay mosaic section.

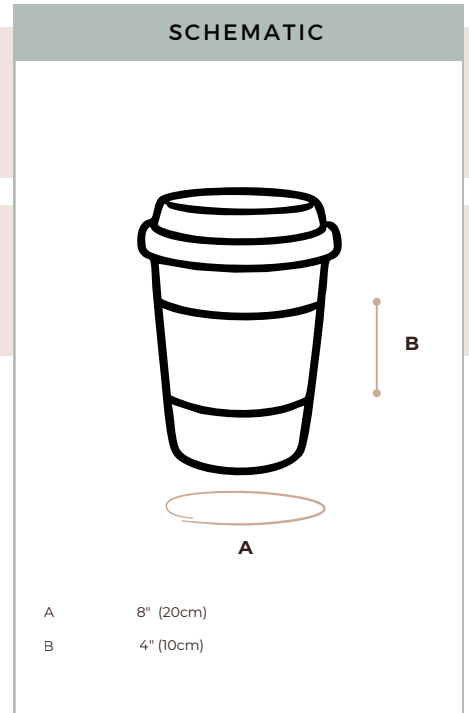
4mm(G) crochet hook for the top and bottom cuffs.

YARN NOTES

This design uses 2 yarn colours, A and B. You only need a small amount of each so it's perfect to raid your stash! Details of colours used are below:

approx yarn A	M	YDS	BALLS
	55	60	1

approx yarn B	M	YDS	BALLS
	36	40	1



ADJUSTING THE SIZE

To **change the circumference** of the holder, work more or less rows of the cuff in multiples of 8.

To **change the height** of the holder, work more or less stitches for the top and bottom cuffs.

OTHER MATERIALS

Scissors

Tapestry needle

Stitch markers

COLOUR COMBINATIONS USED

- 1: **A: Mellowspun Buff, B: Prism Succulent**
- 2: **A: Mellowspun Buff, B: Prism Tropics**
- 3: **A: Prism Sandstorm, B: Mellowspun Buff**
- 4: **A: Prism Sandstorm, B: Mellowspun Buff**



1



2



3



4

VIDEO TUTORIAL

Watch a video tutorial of the project here:



https://youtu.be/f_K9OpW0Cjc

COMMUNITY SUPPORT

Come and join the HanJan Community here:



<https://www.facebook.com/groups/339172563236303>

The above yarn amounts are approximate. Any changes and customisations will adjust the amount of yarn required so make sure to order plenty.





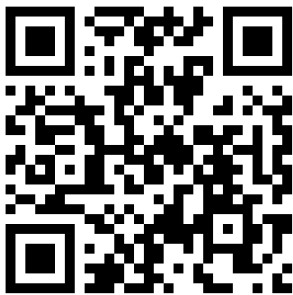
CONSTRUCTION

- The Coffee Cup Sleeve is made from the bottom up starting with the bottom band that is joined to form a ring.
- The body is then worked into the sides of the rows in rounds.
- We then add a Join As You Go band to the top to complete.

VIDEO TUTORIAL

Watch a video tutorial of the project being made

Scan the QR code to watch the video tutorial here:



https://youtu.be/f_K9OpW0Cjc

PATTERN NOTES

- The pattern is worked in rows and rounds using the overlay mosaic crochet technique for the main body.
- All stitches in the Mosaic Sections are worked as sc in blo or Mdc.
- Each Round uses just one colour.
- A ch1 at the beginning or end of a Round does not count as a stitch.
- Read through the entire pattern before beginning.
- Make sure that you are familiar with all of the stitches in the abbreviations list before you begin.
- Stitch counts are given in [] at the end of each round. If no stitch count is given, then the count is the same as the previous round.
- If following charts for the mosaic sections then you will need to follow the written pattern for the bottom and top cuffs.

GLOSSARY

beg - beginning
blo - back loop only
ch(s) - chain(s)
ch-sp(s) - chain space(s)
rep - repeat
RS - right side
sp - space
ss/sl st - slip stitch
st(s) - stitch(es)
tog - together
WS - wrong side
Yoh - yarn over hook

STITCH KEY

US Terms

sc - single crochet
Mdc - Mosaic double crochet

UK conversion:

A US single crochet is a UK double crochet.

A US Mosaic double crochet is a UK Mosaic treble crochet.

SPECIAL STITCHES

SINGLE CROCHET (sc) in back loop only (blo).

Insert hook from front to back through back loop of stitch to be worked. Yarn over and pull through stitch. Yarn over and pull through both loops on the hook.



MOSAIC DOUBLE CROCHET (Mdc)

Yarn over and insert hook into front loop of stitch two rounds below. Yarn over and pull through the stitch. Yarn over and pull through two loops on the hook. Yarn over and pull through remaining two loops on the hook.



The stitch behind the Mdc on the current row is left unworked.

See page 11 for step by step tutorial.

GAUGE SWATCH

A gauge swatch will help you find out if your yarn and hook size will give you the tension for the stocking.

Work a gauge swatch as given below and then block it lightly before measuring to make sure you meet the gauge.

- If your swatch is smaller than the tension states, try changing to a bigger hook.
- If your swatch is bigger than the tension states, try changing to a smaller hook.

This is also a great way to get used to the stitches used in the project and practise getting your stitches nice and neat.

Gauge: 20 sts and 18 rounds = 4" by 4" using 4mm hook

The project is so quick that I would recommend just making one and seeing if you meet the gauge.

If it doesn't then adjust your hook size accordingly.

You can use thicker yarn for this project but just be sure to meet the gauge and use an appropriate size hook for the yarn.

MAKE AND SHARE

There's nothing I'd love more than sharing in the joy of crochet with you.

Whether you're part way through or you've completed your project, please come and find me online and post about it so I can see!



CHART READING

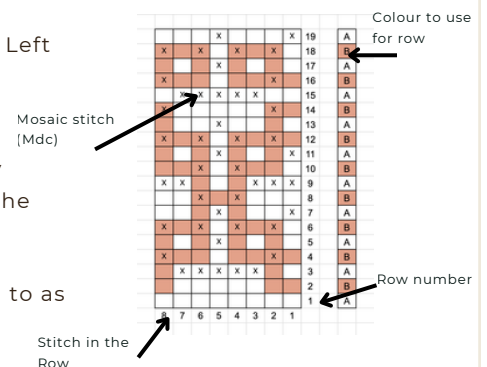
Example of how to read a mosaic chart:

You can either use the charts or the written pattern for the Mosaic Sections.

Read each row from Right to Left on the chart.

All sts are worked as a single crochet in the back loop only unless a Mdc is indicated in the written pattern or the chart.

In the chart a Mdc is referred to as 'X'.



Option 1

TWINKLING TREES CUP SLEEVE

PATTERN

US Terminology

Using the smaller hook (0.5mm smaller than the hook you met gauge with) and colour A, make the Bottom Band.

Foundation chain: ch4, turn.

Row 1: sc in the 2nd ch from hook and each across, turn. [3]

Rows 2-40: ch1, sc in blo of each st, turn.

At the end of the final row, join the final row to the first row with a slip stitch seam to form the Bottom Band shape.

Continue with yarn A but switch to the larger hook for the Main Body.

MAIN BODY

Working **all sc in blo** throughout this section now. Refer to Mosaic Chart (you will need to return to the written pattern once the Main Body is complete for the Top Band instructions) or use the written instructions as follows.

Change colour at the end of each round as indicated when you slip stitch into the blo of the first st to join. Do not break your yarn at the end of each round, just pick it up again when you need it.

Round 1: A: RS: ch1, sc in the side of each row of the Bottom Band, ss in blo of 1st st and change to B. [40]

Round 2: B: ch1, sc in each st around, ss in blo of 1st st and change to A.

Round 3: A: ch1, *Mdc in next 4 sts, sc in next st, Mdc in next 3 sts; rep from * around, ss in blo of 1st st and change to B.

Round 4: B: ch1, *sc in next 4 sts, Mdc in next st, sc in next 3 sts; rep from * around, ss in blo of 1st st and change to A.

Round 5: A: ch1, *Mdc in next st, sc in next 7 sts; rep from * around, ss in blo of 1st st and change to B.

Round 6: B: ch1, *sc in next st, Mdc in next 7 sts; rep from * around, ss in blo of 1st st and change to A.

Round 7: A: Rep Round 5.

Round 8: B: ch1, *sc in next 2 sts, Mdc in next 5 sts, sc in next st; rep from * around, ss in blo of 1st st and change to A.

Round 9: A: ch1, *Mdc in next 2 sts, sc in next 5 sts, Mdc in next st; rep from * around, ss in blo of 1st st and change to B.

Round 10: B: ch1, *sc in next 3 sts, Mdc in next 3 sts, sc in next 2 sts; rep from * around, ss in blo of 1st st and change to A.

Round 11: A: ch1, *Mdc in next 3 sts, sc in next 3 sts, Mdc in next 2 sts; rep from * around, ss in blo of 1st st and change to B.

Round 12: B: Rep Round 4.

Round 13: A: Rep Round 3.

Continue in Yarn A and change to the smaller hook to make the Join As You Go Top Band.

Row 1: ch 4, sc in 2nd ch from the hook and in each along, ss into next st of the Last Round, turn. [3]

Row 2: sc in blo of each st, turn.

Row 3: ch1, sc in blo of each st, ss in next 2 sts of the Last Round, turn.

Rep Rows 2 and 3 along the Last Round. Once complete, join the First Row to the Last Row of the Top Band with a slip stitch seam. Fasten off and weave in ends.

Option 2

MINI TWINKLING TREES CUP SLEEVE

PATTERN

US Terminology

Using the smaller hook (0.5mm smaller than the hook you met gauge with) and colour A, make the Bottom Band.

Foundation chain: ch4, turn.

Row 1: sc in the 2nd ch from hook and each across, turn. [3]

Rows 2-40: ch1, sc in blo of each st, turn.

At the end of the final row, join the final row to the first row with a slip stitch seam to form the Bottom Band shape.

Continue with yarn A but switch to the larger hook for the Main Body.

MAIN BODY

Working **all sc in blo** throughout this section now. Refer to Mosaic Chart (you will need to return to the written pattern once the Main Body is complete for the Top Band instructions) or use the written instructions as follows.

Change colour at the end of each round as indicated when you slip stitch into the blo of the first st to join. Do not break your yarn at the end of each round, just pick it up again when you need it.

Round 1: A: RS: ch1, sc in the side of each row of the Bottom Band, ss in blo of 1st st and change to B. [40]

Round 2: B: ch1, sc in each st around, ss in blo of 1st st and change to A.

Round 3: A: ch1, *Mdc in next 4 sts, sc in next st, Mdc in next 3 sts; rep from * around, ss in blo of 1st st and change to B.

Round 4: B: ch1, *sc in next 4 sts, Mdc in next st, sc in next 3 sts; rep from * around, ss in blo of 1st st and change to A.

Round 5: A: ch1, *Mdc in next 2 sts, sc in next 5 sts, Mdc in next st; rep from * around, ss in blo of 1st st and change to B.

Round 6: B: ch1, *sc in next 2 sts, Mdc in next 5 sts, sc in next st; rep from * around, ss in blo of 1st st and change to A.

Round 7: A: Rep Round 5.

Round 8: B: ch1, *sc in next 3 sts, Mdc in next 3 sts, sc in next 2 sts; rep from * around, ss in blo of 1st st and change to A.

Round 9: A: ch1, *Mdc in next 3 sts, sc in next 3 sts, Mdc in next 2 sts; rep from * around, ss in blo of 1st st and change to B.

Round 10: B: Rep Round 4.

Round 11: A: Rep Round 3.

Round 12: B: Rep Round 2.

Round 13: A: Rep Round 3.

Continue in Yarn A and change to the smaller hook to make the Join As You Go Top Band.

Row 1: ch 4, sc in 2nd ch from the hook and in each along, ss into next st of the Last Round, turn. [3]

Row 2: sc in blo of each st, turn.

Row 3: ch1, sc in blo of each st, ss in next 2 sts of the Last Round, turn.

Rep Rows 2 and 3 along the Last Round. Once complete, join the First Row to the Last Row of the Top Band with a slip stitch seam. Fasten off and weave in ends.

Option 3

STARLIGHT CUP SLEEVE

PATTERN

US Terminology

Using the smaller hook (0.5mm smaller than the hook you met gauge with) and colour A, make the Bottom Band.

Foundation chain: ch4, turn.

Row 1: sc in the 2nd ch from hook and each across, turn. [3]

Rows 2-40: ch1, sc in blo of each st, turn.

At the end of the final row, join the final row to the first row with a slip stitch seam to form the Bottom Band shape.

Continue with yarn A but switch to the larger hook for the Main Body.

MAIN BODY

Working **all sc in blo** throughout this section now. Refer to Mosaic Chart (you will need to return to the written pattern once the Main Body is complete for the Top Band instructions) or use the written instructions as follows.

Change colour at the end of each round as indicated when you slip stitch into the blo of the first st to join. Do not break your yarn at the end of each round, just pick it up again when you need it.

Round 1: A: RS: ch1, sc in the side of each row of the Bottom Band, ss in blo of 1st st and change to B. [40]

Round 2: B: ch1, sc in each st around, ss in blo of 1st st and change to A.

Round 3: A: ch1, *sc in next st, Mdc in next 3 sts; rep from * around, ss in blo of 1st st and change to B.

Round 4: B: ch1, *sc in next 4 sts, Mdc in next st, sc in next 3 sts; rep from * around, ss in blo of 1st st and change to A.

Round 5: A: ch1, *sc in next st, Mdc in next 2 sts, sc in next 3 sts, Mdc in next 2 sts; rep from * around, ss in blo of 1st st and change to B.

Round 6: B: ch1, *sc in next 3 sts, Mdc in next st, sc in next st, Mdc in next st, sc in next 2 sts; rep from * around, ss in blo of 1st st and change to A.

Round 7: A: Rep Round 5.

Round 8: B: Rep Round 6.

Round 9: A: Rep Round 5.

Round 10: B: Rep Round 4.

Round 11: A: Rep Round 3.

Round 12: B: Rep Round 2.

Round 13: A: Rep Round 3.

Continue in Yarn A and change to the smaller hook to make the Join As You Go Top Band.

Row 1: ch 4, sc in 2nd ch from the hook and in each along, ss into next st of the Last Round, turn. [3]

Row 2: sc in blo of each st, turn.

Row 3: ch1, sc in blo of each st, ss in next 2 sts of the Last Round, turn.

Rep Rows 2 and 3 along the Last Round. Once complete, join the First Row to the Last Row of the Top Band with a slip stitch seam. Fasten off and weave in ends.

Option 4

STARBURST CUP SLEEVE

PATTERN

US Terminology

Using the smaller hook (0.5mm smaller than the hook you met gauge with) and colour A, make the Bottom Band.

Foundation chain: ch4, turn.

Row 1: sc in the 2nd ch from hook and each across, turn. [3]

Rows 2-40: ch1, sc in blo of each st, turn.

At the end of the final row, join the final row to the first row with a slip stitch seam to form the Bottom Band shape.

Continue with yarn A but switch to the larger hook for the Main Body.

MAIN BODY

Working **all sc in blo** throughout this section now. Refer to Mosaic Chart (you will need to return to the written pattern once the Main Body is complete for the Top Band instructions) or use the written instructions as follows.

Change colour at the end of each round as indicated when you slip stitch into the blo of the first st to join. Do not break your yarn at the end of each round, just pick it up again when you need it.

Round 1: A: RS: ch1, sc in the side of each row of the Bottom Band, ss in blo of 1st st and change to B. [40]

Round 2: B: ch1, sc in each st around, ss in blo of 1st st and change to A.

Round 3: A: ch1, *sc in next 3 sts, Mdc in next st; rep from * around, ss in blo of 1st st and change to B.

Round 4: B: ch1, *sc in next st, Mdc in next st, sc in next 3 sts, Mdc in next st, sc in next 2 sts; rep from * around, ss in blo of 1st st and change to A.

Round 5: A: ch1, *Mdc in next st, sc in next st; rep from * around, ss in blo of 1st st and change to B.

Round 6: B: Rep Round 3.

Round 7: A: Rep Round 5.

Round 8: B: Rep Round 4.

Round 9: A: Rep Round 5.

Round 10: B: Rep Round 3.

Round 11: A: Rep Round 5.

Round 12: B: Rep Round 4.

Round 13: A: Rep Round 3.

Continue in Yarn A and change to the smaller hook to make the Join As You Go Top Band.

Row 1: ch 4, sc in 2nd ch from the hook and in each along, ss into next st of the Last Round, turn. [3]

Row 2: sc in blo of each st, turn.

Row 3: ch1, sc in blo of each st, ss in next 2 sts of the Last Round, turn.

Rep Rows 2 and 3 along the Last Round. Once complete, join the First Row to the Last Row of the Top Band with a slip stitch seam. Fasten off and weave in ends.

Mosaic Double Crochet

STEP BY STEP TUTORIAL

INTRODUCTION

A Mosaic double crochet stitch is worked in exactly the same way as a regular US double crochet (UK treble crochet) is. The only difference is where it is worked.

In overlay mosaic crochet we are always working our single crochet stitches into the back loop, leaving the front loops free to work in.

When you need to work a Mosaic double crochet you'll need to find the front loop of the corresponding stitch 2 rounds below. This is where you will work your stitch.

Top tip - it will be in the same colour of yarn as the one you are currently working in!



STEP BY STEP IMAGES



1
yarn over to begin the mosaic double crochet (Mdc)



2
insert hook into front loop of stitch 2 rounds below



3
yarn over and pull through



4
yarn over and pull through 2 loops on the hook



5
yarn over and pull through remaining loops on the hook



6
completed mosaic double crochet stitch (Mdc)



7
skip stitch directly behind your Mdc



8
continue working the round as per pattern



each 'X' on the chart represents a Mdc stitch

Top Tip

Don't be afraid to really move your stitches on the round to find out which loop is the next one you need to work in. The first round of the Mosaic Section is the most important to get right so make sure you check before moving on .

Mosaic Charts

FESTIVE COFFEE CUP SLEEVES

CHART READING AND NOTES

Use one colour per round, indicated on the right of the chart. Work a sc in the blo unless there is an 'X' in the chart. An 'X' indicates a Mdc for that stitch.

CHART 1

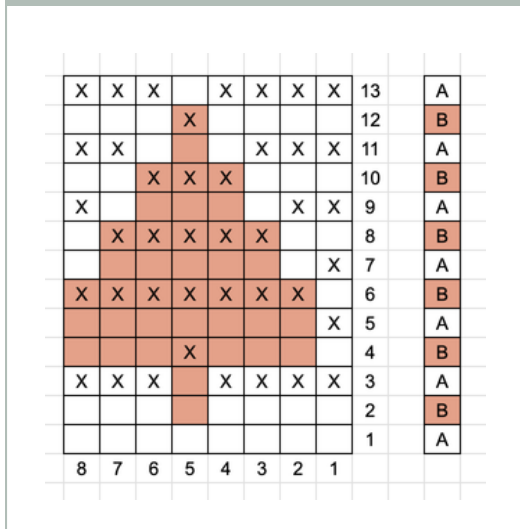


CHART 2

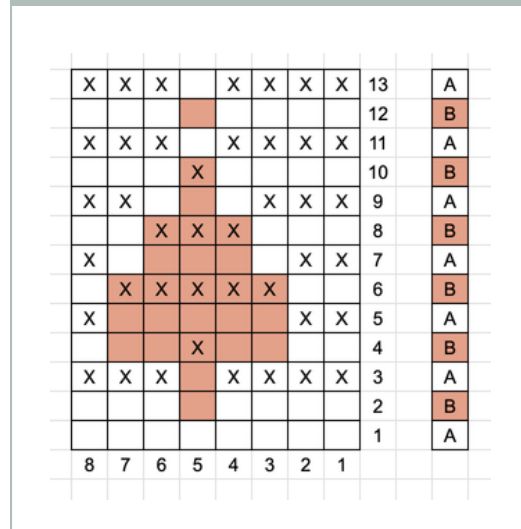


CHART 3

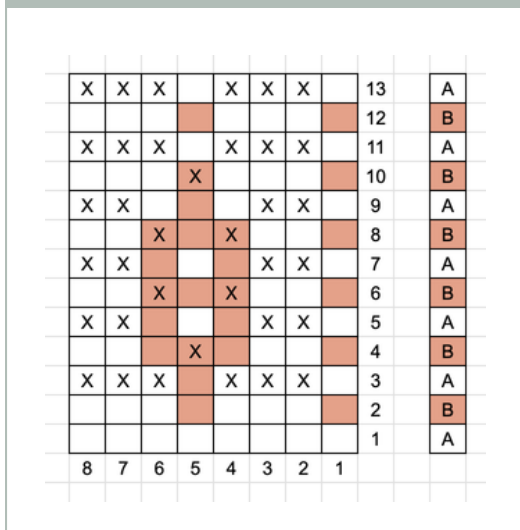
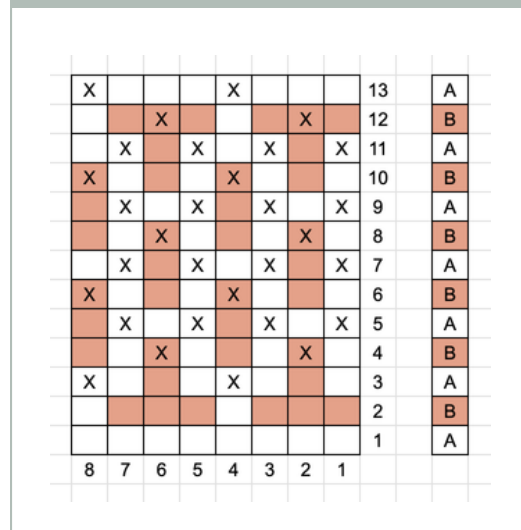
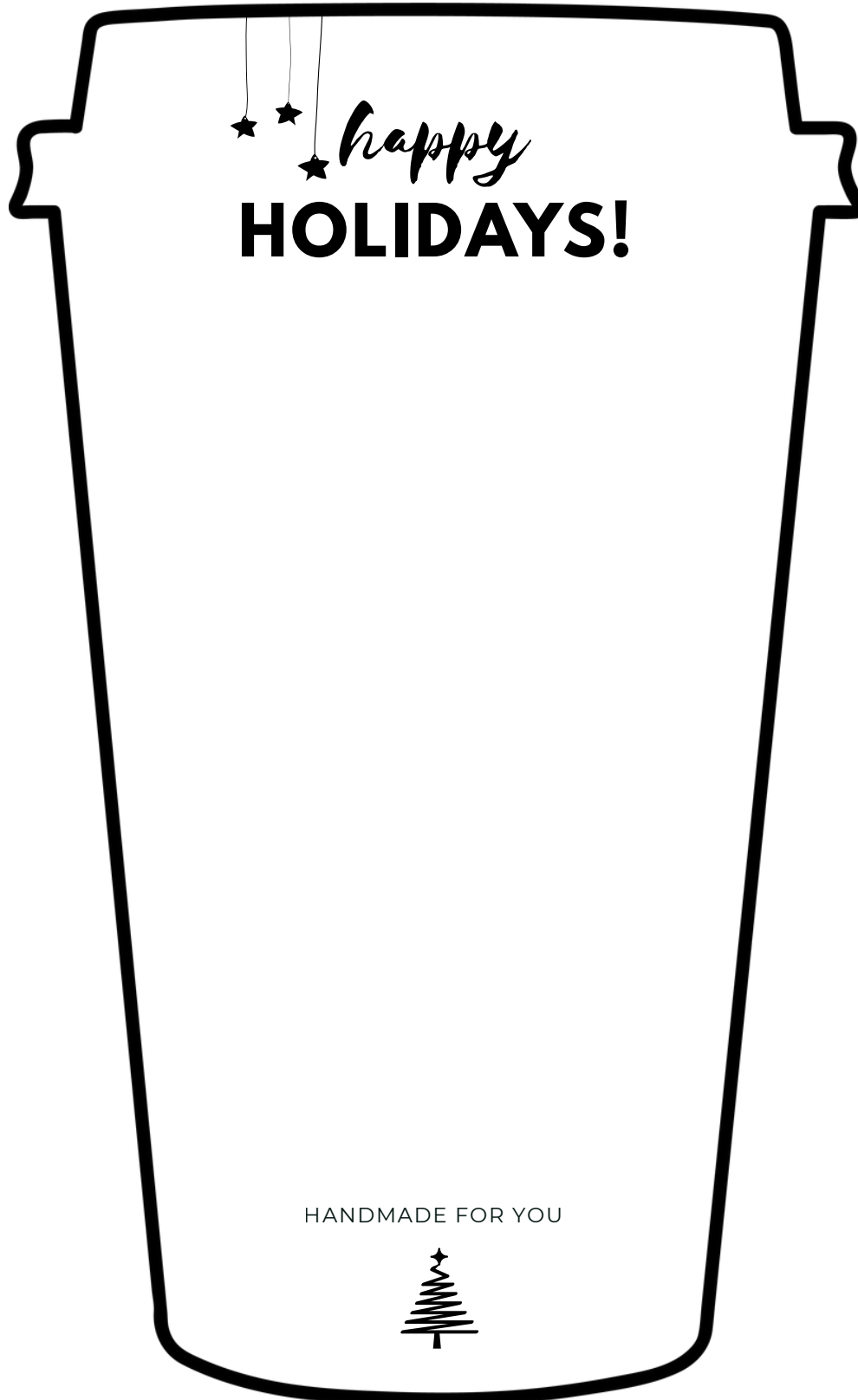


CHART 4



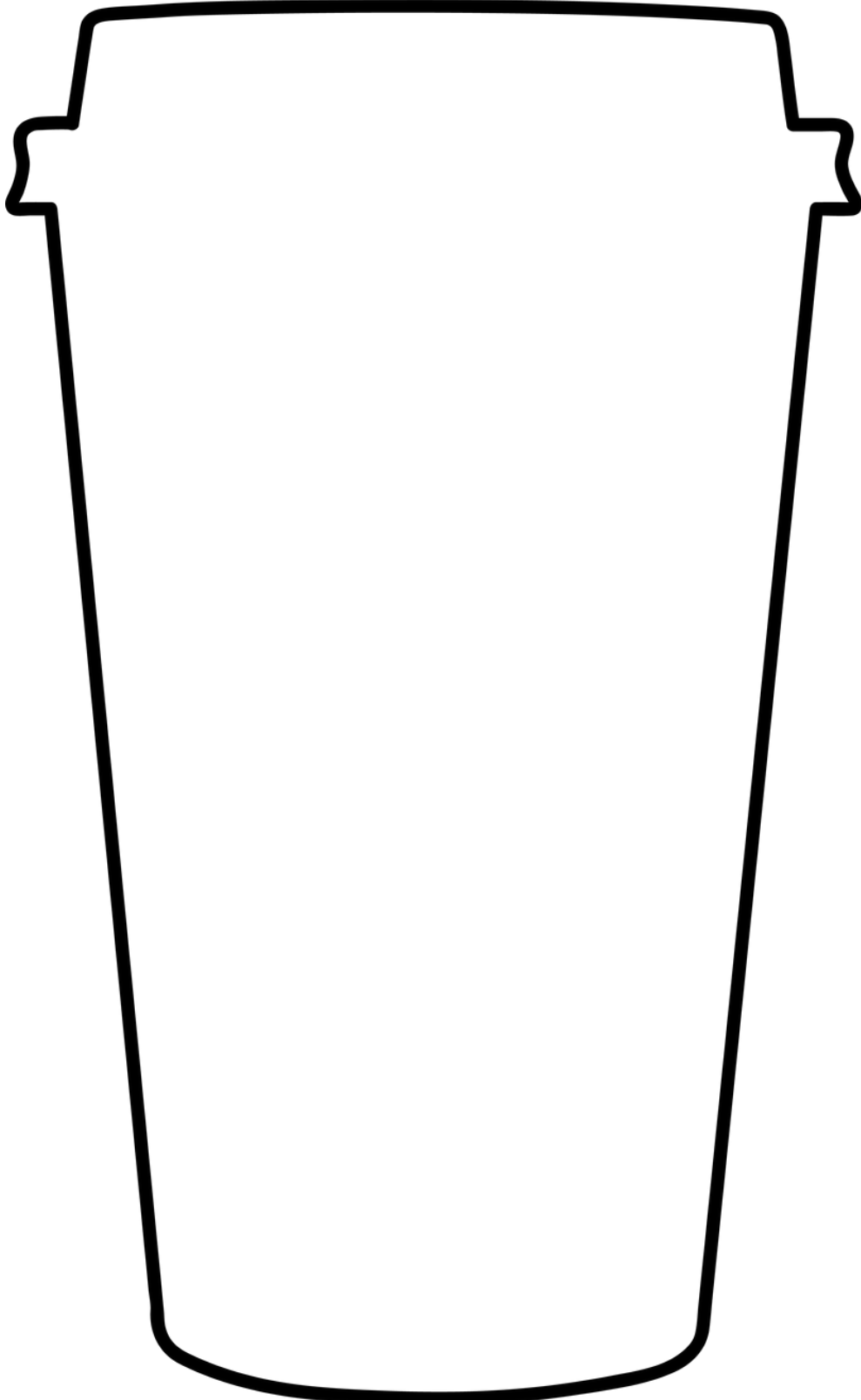
Market Stall/Gift Template

If like me you're planning on making these as cute festive gifts then what better way to present them than on a cute little holder! Simply print this out (stock card is best to stay nice and flat) then cut it out and pop your finished crochet sleeve on it!



Market Stall/Gift Template

If like me you're planning on making these as cute festive gifts then what better way to present them than on a cute little holder! Simply print this out (stock card is best to stay nice and flat) then cut it out and pop your finished crochet sleeve on it! - Here's a nice plain one that you can decorate if you like 😊



More About HanJan

I am delighted to have been able to share this design with you!

Being creative has always been so important to me and being able to do it as a full time career is beyond anything I could have dreamed of.

My mission is to support everyone and anyone in achieving anything they'd like to with crochet through writing, designing and teaching. I'd be honoured if you'd like to join me in my adventures!



Find HanJan

- BLOG | <https://www.hanjancrochet.com>
- INSTAGRAM | <https://www.instagram.com/hanjancrochet>
- FACEBOOK | <https://www.facebook.com/HanJanCrochet>
- PINTEREST | <https://www.pinterest.co.uk/HanJanCrochet>
- ETSY | <https://tidd.ly/348wbpu>
- RAVELRY | <https://www.ravelry.com/designers/hannah-cross-2>

Pattern Support

The HanJan Community welcomes all HanJan Crochet pattern support questions and of course pictures too!

join the community



click here to join today!

