

WIDCOMBE C2C HAT

by Hannah Cross

Perfect for those chilly days, this corner-to-corner crochet hat is a triumph. Stylish and modern, easy to wear, great fun to make and with an unusual construction, this hat is guaranteed to be a go-to pattern year after year. In sizes from Baby to Large Adult you can make one for the whole family to enjoy.

DIFFICULTY: Intermediate
TECHNIQUE: Corner to corner



This pattern contains affiliate links. Find my [privacy policy](#) and [disclosure here](#).

YARN

Wool of the Andes Worsted
Weight by WeCrochet

100% Peruvian Highland Wool,
110yds/50g.

Yarn A required (balls): 1 (1, 1, 2).

Yarn B required (balls): 1 (1, 2, 2).

-

MATERIALS

- 4.5mm/G+ **Cookies N' Cream Furls** **crochet hook** (or hook needed to obtain gauge)

- Scissors

- Tapestry Needle

- **Pom Pom Maker** (Clover set)

SIZING

Baby (Child, Teen/Small Adult, Large Adult)

GAUGE

8x8 C2C blocks = 4 inches by 4 inches

PATTERN

Find the sizing details and written pattern free on my blog.

VIDEO

A full video tutorial of the hat is available here including tips and tricks for how to neatly change yarn color and seam your hat too.

[CLICK HERE FOR THE PATTERN](#)

[CLICK HERE FOR VIDEO](#)

WIDCOMBE C2C HAT

CHARTS

On the charts, each square represents 1 c2c block. Read the charts from the bottom right-hand corner, where Row 1 is.

Each row is read diagonally, with even-numbered rows read from bottom left to top right and odd-numbered rows read from top right to bottom left.



Yarn A



Yarn B

Baby

	43	42	41	40	39	38	37	36	35	34	33	32	31	30	29	28	27	26	25	24	23	22	21	20	19	18	17	16	15	14			
43																																14	
42																																	13
41																																	12
40																																	11
39																																	10
38																																	9
37																																	8
36																																	7
35																																	6
34																																	5
33																																	4
32																																	3
31																																	2
30																																	1
	30	29	28	27	26	25	24	23	22	21	20	19	18	17	16	15	14	13	12	11	10	9	8	7	6	5	4	3	2	1			

Child

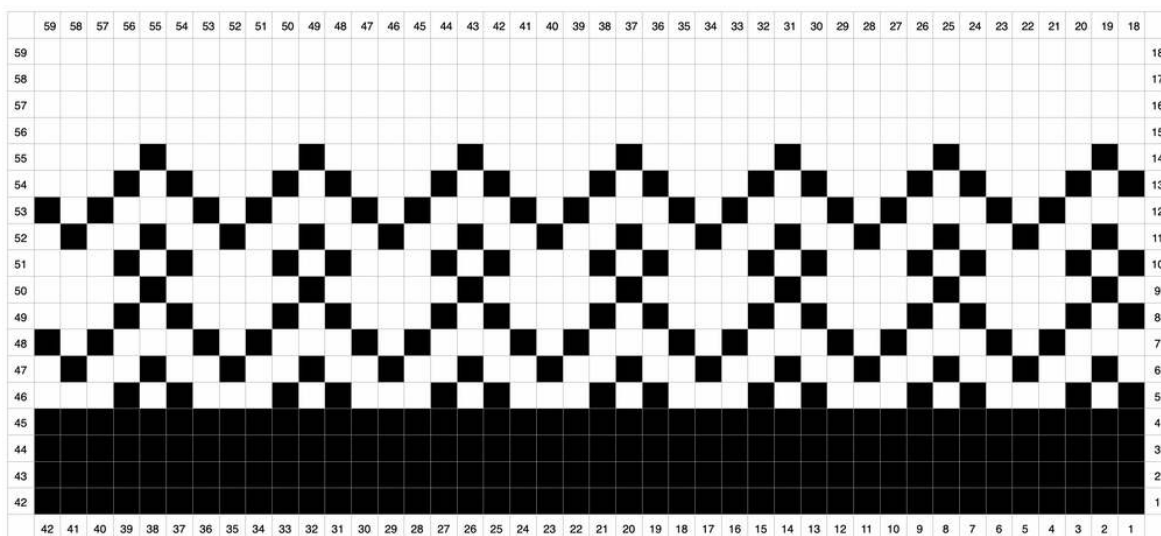
	51	50	49	48	47	46	45	44	43	42	41	40	39	38	37	36	35	34	33	32	31	30	29	28	27	26	25	24	23	22	21	20	19	18	17	16
51																																				16
50																																				15
49																																				14
48																																				13
47																																				12
46																																				11
45																																				10
44																																				9
43																																				8
42																																				7
41																																				6
40																																				5
39																																				4
38																																				3
37																																				2
36																																				1
	36	35	34	33	32	31	30	29	28	27	26	25	24	23	22	21	20	19	18	17	16	15	14	13	12	11	10	9	8	7	6	5	4	3	2	1

WIDCOMBE C2C HAT

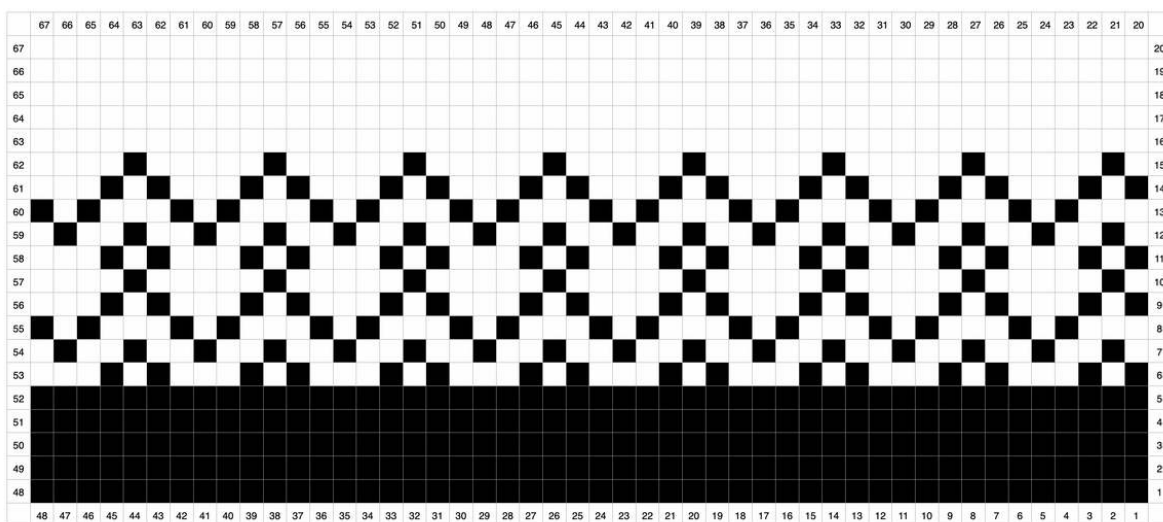
CHARTS



Teen/Small Adult



Large Adult



Find and join HanJan Crochet here

