

Paragon Plaid Blanket

BY HANNAH CROSS



CROCHET PATTERN

This pattern contains affiliate links. Find my [privacy policy and disclosure here.](#)

The Paragon Plaid Crochet Blanket is an easy, modern and simply beautiful blanket to suit everyone. Perfect for beginners wanting to learn crochet colour work, great for using up stash and available in five sizes from Premature Baby size to Single Bed. Go traditional with your colours, make a rainbow or keep it neutral, the choice is yours!

Difficulty

Easy



Recommended Yarn

[Deramores Studio DK](#)

100% acrylic - 250m/200g

Hook

A 5mm (US H) [crochet hook](#)

Other Materials and Tools

[Scissors](#)

[Tapestry needle](#)

Size

The blanket is sized in Premature Baby Blanket, Baby Blanket, Lapghan, Throw and Single Bed. See page 3 for sizes.

Tension

15sts and 10 rows = 10cm by 10cm

Suggested colours

A: Slate

B: Pearl

C: Rosemary

Yarn Quantities

See chart on page 3 for approximate yarn quantities for each size.

Glossary

ch(s) - chain(s)
 ss - slip stitch
 st(s) - stitch(es)
 rep - repeat
 RS - right side

Yarn Alternatives

Choosing yarn is so important (and fun!) but I know it's great to have options depending on your budget, here are some great alternatives I've found. Whatever yarn you choose, just make sure to check your gauge before starting your project as they will all be slightly different.

£££

Touch of Merino Yarn by Lion Brand

90% acrylic, 10% merino,
 235m/100g

££

Bellisima by Stylecraft

100% acrylic, 268m/100g

£

Simply DK by Paintbox Yarns

100% acrylic, 276m/100g

Join HanJan Crochet

I'D LOVE TO SEND YOU A FREE PATTERN!

Sign up to HanJan and get my most popular pattern, keep up to date with new releases and be the first to know about exclusive offers and discount codes!

[CLICK HERE TO GET YOUR FREE PATTERN](#)



Contents

Resizing Guide and Yarn Quantities	Page 3
Colour work Guide	Page 3
Pattern in UK and US Terminology	Page 4
Colour Chart	Page 5

Notes

A ch1 at the beginning of a row does not count as a stitch.



Watch a video tutorial of the blanket and colour work here: <https://youtu.be/xMPRt04Q7eM>

Stitch Key

UK Terms

htr - half treble crochet

US Terms

hdc - half double crochet

You are very welcome to sell products that you make using my pattern on small scale. If you could credit HanJan Crochet as the designer I would really appreciate it and if you tag me on social media I'd love to share it for you! You may not duplicate or share this pattern in any way. Thank you.

Find and join HanJan Crochet here



Sizing and Yarn Quantity Guide

To adjust the size of your blanket, you can just work more or less stitches and rows as follows:

Type of blanket	Finished blanket size (cm)	Foundation chain length	No. of rows to work	Yarn A approx	Yarn B approx	Yarn C approx
Premature Baby	34 x 40	49	41	40g/100m	20g/50m	20g/50m
Baby	78 x 94	115	93	220g/545m	100g/250m	100g/250m
Lapghan	110 x 134	163	133	445g/1115m	220g/545m	220g/545m
Throw	134 x 150	199	153	600g/1500m	300g/750m	300g/750m
Single Bed	150 x 222	229	221	1000g/2500m	500g/1250m	500g/1250m

Colourwork - carrying yarn and changing colours

Using multiple colours in crochet can seem really intimidating at first but, like anything, once you get the hang of it you'll be a pro.

The blanket is worked in one piece using two colours per row.

The colours are carried through the stitches to minimise the amount of ends to weave in. To do this you need to encase the second colour that you don't need for your current stitch within the stitch you make.

Hold the yarn as close to the previous row as you can to keep it neat and experiment to see what works for you.

Leave the third colour where it is when you turn to work the next row and pick it up again two rows later to work with it again.

When changing colour do so on the last yarn over of the stitch before you need the new colour to start.

Complete the stitch with the new colour to ensure a clean and neat colour change.

Please don't worry if that doesn't make sense - I've made a video tutorial to walk you through it too.



Watch a video tutorial of the blanket and colourwork here: <https://youtu.be/xMPRt04Q7eM>

Paragon Plaid Blanket

UK Terminology

Using yarn A, chain 49 (115, 163, 199, 229)

Row 1: RS: htr in 2nd ch from hook and each across [48, (114, 162, 198, 228)]

Row 2: ch1, *htr in next 3 in A, htr in next 3 in B, rep from * across.

Row 3: ch1, *htr in next 3 in B, htr in next 3 in A, rep from * across, change to C.

Row 4: ch1, *htr in next 3 in C, htr in next 3 in A, rep from * across.

Row 5: ch1, *htr in next 3 in A, htr in next 3 in C, rep from * across, change to A.

Rows 2-5 create the set pattern.

Rows 6-41 (93, 133, 153, 221): Repeat the set pattern.

Border:

With RS facing, join A to last st of Row 1 (Row 1 counts as part of the border).

Round 1: ch1, htr in same place as last st, rotate to work along long edge, htr in side of each row to corner, (htr, ch1, htr) in corner, rotate to work along short edge, htr in each st to corner, (htr, ch1, htr) in corner, rotate to work along long edge, htr in side of each row to corner, ch1, ss to 1st st of Row 1 to join.

Fasten off and weave in ends.

US Terminology

Using yarn A, chain 49 (115, 163, 199, 229)

Row 1: RS: hdc in 2nd ch from hook and each across [48, (114, 162, 198, 228)]

Row 2: ch1, *hdc in next 3 in A, hdc in next 3 in B, rep from * across.

Row 3: ch1, *hdc in next 3 in B, hdc in next 3 in A, rep from * across, change to C.

Row 4: ch1, *hdc in next 3 in C, hdc in next 3 in A, rep from * across.

Row 5: ch1, *hdc in next 3 in A, hdc in next 3 in C, rep from * across, change to A.

Rows 2-5 create the set pattern.

Rows 6-40 (92, 132, 152, 220): Repeat the set pattern.

Border:

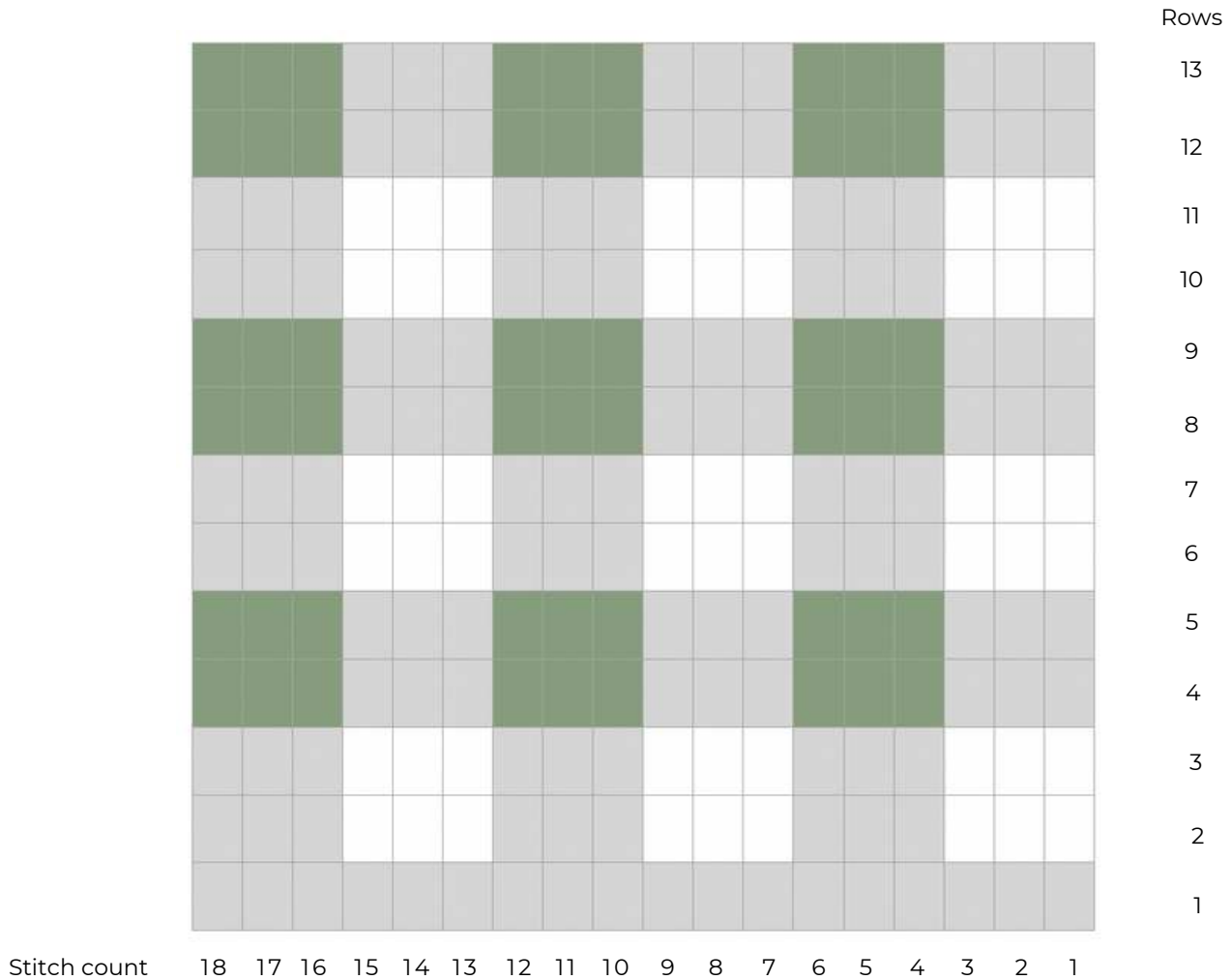
With RS facing, join A to last st of Row 1 (Row 1 counts as part of the border).

Round 1: ch1, hdc in same place as last st, rotate to work along long edge, hdc in side of each row to corner, (hdc, ch1, hdc) in corner, rotate to work along short edge, hdc in each st to corner, (hdc, ch1, hdc) in corner, rotate to work along long edge, hdc in side of each row to corner, ch1, ss to 1st st of Row 1 to join.

Fasten off and weave in ends.

Paragon Plaid Blanket Chart

If you prefer to work with charts then you can use this one to see where the colour changes happen.



Key

- Colour A: Slate
- Colour B: Pearl
- Colour C: Rosemary

